



## *Robert Illesh To Horsenden*



*Quirky Progressive Folk  
or a modern tale of going out into the world, coming back changed  
and expression through lyric and song*



*To Horsenden is a new solo album by Robert Illesh who is an internationally acclaimed guitarist, producer, composer and ambassador for all things prog. Robert is probably best known for the 2008 Aquaplanage album and for his work with Steve Howe and others in the Yes and prog fraternity.*

*Music on 'To Horsenden' culminates four decades of going to far flung places and coming back again. While many aspects of life change, some things, like the quiet presence of 'The Hill' - brought to life in original cover art by Sonia Illes - are a constant. It is in this spirit that this album is offered.*

*Some never-heard-before archive recordings are given the light along with some brand new offerings. Subject matter ranges from the global to the frivolous. From ice cream, fresh drops of rain on cow parsley, to a lament about globalisation and where it is taking us.*

*Robert sings and plays pretty much everything under the sun, no surprises there. The acoustic guitar is forefront. Writing collaborations with Adam Gumsley, Chris Connor and David Macrow accompany solo pieces. Sarah Turner offers some strings, a guitar solo by Chris C is sneaked in and Russ Wilson provides his usual expert drums throughout. Rob Aubrey provides the final mastering touch.*

*Some proceeds will be donated to the Horsenden allotment society - long may it remain a haven for the community to grow fresh veggies!*

# High Praise for Past Work



Aquaplanage  
(2008) CFR-001

## NU-PROG ICONS

### AQUAPLANAGE S/T



Life-affirming prog rock from a six piece who wear their 1970s influences on their sleeves, yet mould these timeless traces of vintage British ventures into their own musical landscape of excellent dynamics, stunning solos and consummate lyrical expression. *Ode To Grey Mornings* is set to be a prog classic, as its 15 minutes and five sections

find superbly-produced lead and group passages, plus flute and sound samples delivered in brilliant succession. Anyone seeking a modern edition of Genesis's *Selling England By The Pound*, Jethro Tull's *Thick As A Brick* or Yes's *Close To The Edge* should grab every opportunity to catch this band. A simply tremendous album.

[www.aquaplanage.com](http://www.aquaplanage.com)

Musicians Union Journal  
Spring 2009

## By Geoff Barton

### Aquaplanage

#### Cheeky Features



They might sound like a French splash'n'slide water theme park, but Aquaplanage have more in common with oceans.

*Topographic Oceans*, to be precise. Yep, this lot have a massive Yes fixation - in fact, they're an offshoot of Yes tribute band *Fragile*. But, as with *Starcastle*, it's all done in the best possible taste. *Ode To Grey Mornings* is a perfectly formed epic, while instrumental *Theme* has been described as 'Steve Howe meets Fleetwood Mac'.



Classic Rock Magazine  
May 2009, Issue 131



Golden  
(2011) OFR-001

"Beautifully written, beautifully constructed and beautifully performed,

'Golden' is simply... beautiful."

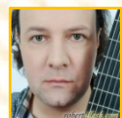
Steven Reid, Fireworks Magazine

"This has been a labour of love for Illesh and suggests that he's a romantic at heart... This is music for reflection, meditation or just simply enjoying."

Geoff Feakes, Dutch Progressive Rock Pages

"It's wonderful to hear beauty and virtuosity at the same time. You use your skills to create beauty and serenity. It feels good and sincere."

Paula Jakobi, Yesfocus Holland



# To Horsenden Album Scrapbook



'The View', album raison d'être



Horsenden Oakwood



"Be your little dawg..."



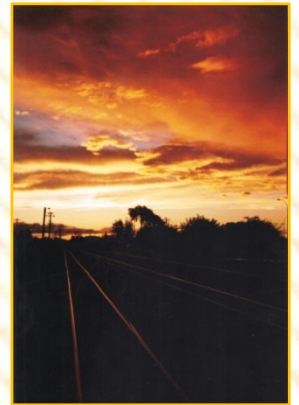
Off on an adventure – New Zealand



Another adventure – South India



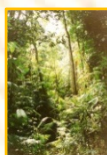
Surprise, surprise – yet another adventure



Cover for a blues album?

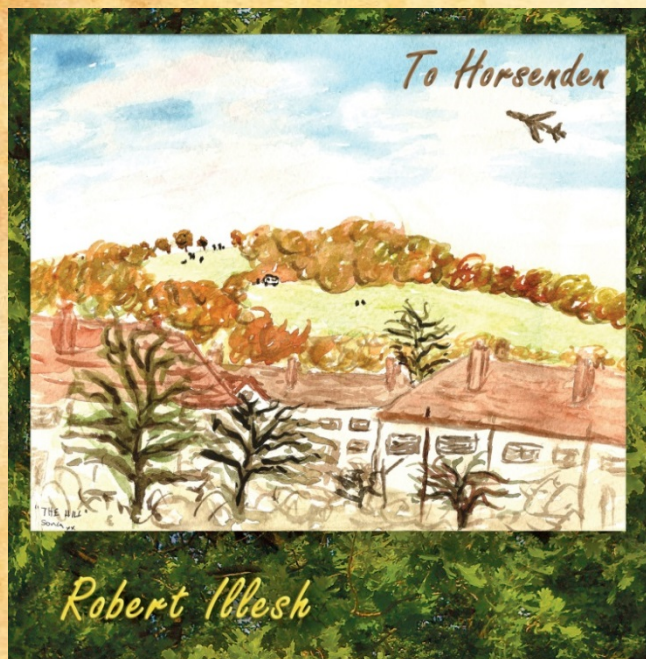


The 'Spirit of North Carolina'



Down the shed – holy ground

# To Horsenden Album Details



- |     |  |      |
|-----|--|------|
| 1.  | Strummin Dawg                                      | 2.39 |
| 2.  | A Song for You                                     | 2.26 |
| 3.  | After the Rain, Song                               | 2.58 |
| 4.  | Tiger Song   | 6.55 |
| 5.  | Matchbox Blues                                     | 4.24 |
| 6.  | Wallowing in a Self-Made Little Garden of Thoughts | 2.51 |
| 7.  | Were You There?                                    | 3.03 |
| 8.  | A Very Delicate Time Indeed                        | 3.39 |
| 9.  | A Day in June                                      | 2.57 |
| 10. | North Carolina                                     | 5.44 |
| 11. | How do I Know?                                     | 5.43 |
| 12. | Traveller's End                                    | 4.24 |

To Horsenden by Robert Illesh © 2015 Opal Flame

Cat no. OFR-002

Barcode no. 889211240951

Licensed by MCPS

All rights reserved



Produced by Robert Illesh

Mastered by Rob Aubrey at Aubitt Studios

Original cover art by Sonia Illes

Robert Illesh, vocals and all instruments. Also featuring:

Chris Connor, lead guitar on Matchbox Blues; Sarah Turner, violin & viola on North Carolina; Russ Wilson, drums throughout.

## Contact

For all product enquiries, licensing and performance requests, including any request to reproduce any material in any format and/or arrangement; in the first instance please email:

[press@robertillesh.com](mailto:press@robertillesh.com)

[press@robertillesh.com](mailto:press@robertillesh.com)

[www.robertillesh.com](http://www.robertillesh.com)